

# PRODUCT CATALOGUE

TECHNICAL INSULATION

**nmc**

TECHNICAL  
INSULATION

Запитуйте продукцію в магазинах Півдюйма та на сайті [www.pivduyma.ua](http://www.pivduyma.ua)



# TECHNICAL INSULATION

by



[www.nmc-insulation.com](http://www.nmc-insulation.com)

# TOLERANCES

## ELASTOMERIC INSULATION MATERIALS (FEF)

TOLERANCE ACCORDING TO EN 14304

Delivery form	Length	Width	Thickness		Squareness	Inside diameter	
			declared	tolerance		$D_{i,D} \leq 100$	$D_{i,D} > 100$
Tubes	$\pm 1,5\%$	—	$d_b \leq 8$ $8 < d_b \leq 18$ $18 < d_b \leq 31$ $d_b > 31$	$\pm 1,0$ $\pm 1,5$ $\pm 2,5$ $\pm 3,0$	3,0 mm	$D_{i,D} + 1 \leq D_i \leq D_{i,D} + 4$	$D_{i,D} + 1 \leq D_i \leq D_{i,D} + 6$
Plaques	$\pm 1,5\%$	$\pm 2,0\%$	$d_b \leq 6$ $6 < d_b \leq 19$ $d_b > 19$	$\pm 1,0$ $\pm 1,5$ $\pm 2,0$	3,0 mm/m (L/w) — 3,0 mm (thickness)	—	—
Sheets/ Rolls	+5,0 % -1,5 %	$\pm 2,0\%$	$d_b \leq 6$ $6 < d_b \leq 19$ $d_b > 19$	$\pm 1,0$ $\pm 1,5$ $\pm 2,0$	3,0 mm/m (L/w) — 3,0 mm (thickness)	—	—
Tapes	+5,0 % -1,5 %	$\pm 2,0\%$	$d_b = 3$	-0,1 +1,5	—	—	—

## POLYETHYLENE INSULATION MATERIALS (PEF)

TOLERANCE ACCORDING TO EN 14313

Delivery form	Length	Width	Thickness		Squareness	Inside diameter		
			declared	tolerance		$D_{i,D} \leq 35$	$35 < D_{i,D} \leq 100$	$D_{i,D} > 100$
Tubes	-1,5 % +2,5 %	—	$d_b \leq 6$ $6 < d_b \leq 10$ $10 < d_b \leq 15$ $15 < d_b \leq 30$ $d_b > 30$	$\pm 1,0$ $\pm 1,5$ $\pm 2,0$ $\pm 2,5$ $\pm 4,0$	5,0 mm pour $D_{i,D} \leq 60$ mm and 10,0 mm für $60 < D_{i,D} \leq 120$ mm	$D_{i,D} + 1$ bis $D_{i,D} + 4$	$D_{i,D} + 2$ bis $D_{i,D} + 6$	$D_{i,D} + 3$ bis $D_{i,D} + 8$
Profiles	-1,5 % +2,5 %	—	$d_b \leq 6$ $6 < d_b \leq 10$ $10 < d_b \leq 15$ $15 < d_b \leq 30$ $d_b > 30$	$\pm 1,0$ $\pm 1,5$ $\pm 2,0$ $\pm 2,5$ $\pm 4,0$	5,0 mm pour $D_{i,D} \leq 60$ mm and 10,0 mm pour $60 < D_{i,D} \leq 120$ mm	$D_{i,D} + 1$ bis $D_{i,D} + 4$	$D_{i,D} + 2$ bis $D_{i,D} + 6$	$D_{i,D} + 3$ bis $D_{i,D} + 8$
Sheets/ Rolls	$\pm 1,5\%$	$\pm 1,0\%$	$d_b \leq 5$ $5 < d_b \leq 10$ $10 < d_b \leq 15$ $15 < d_b \leq 30$ $d_b > 30$	$\pm 1,0$ $\pm 1,5$ $\pm 2,0$ $\pm 2,5$ $\pm 3,5$	10,0 mm/m (L/w) — 2,0 mm (thickness)	—	—	—
Tapes	$\pm 1,5\%$	$\pm 2,0$ mm	—	$\pm 0,5$	—	—	—	—

## MINERAL WOOL TOLERANCE ACCORDING TO EN 14303

Delivery form	Length	Width	Thickness tolerance	Squareness	Inside diameter	uniformity of thickness
shell	$\pm 5,0$	—	$\pm 5,0\%$ ou $\pm 3,0^\circ$	$\pm 4,0$ ou $\pm 2,0\%$ in relation to the outside diameter <sup>a</sup>	+ 4 - 0	Difference of less than 6 mm or 10% <sup>a</sup>

## POLYURETHANE TOLERANCE ACCORDING TO EN 13467:2018

Delivery form	Length	Width	Thickness tolerance	Squareness	Inside diameter	uniformity of thickness
shell	$\pm 3,0$	—	$\pm 2,0$	Performance not evaluated	+2 -0	+3 -0 Performance not evaluated

Dimensions in millimeter •  $dD$  = nominal thickness of the product •  $D_{i,D}$  = nominal value of a tube's inside diameter  
(L/w) = (Length/width) •  $\alpha$ : The highest numerical value is decisive

# CONTENTS

APPLICATION AREA .....	7
We take our responsibilities seriously.....	12
CLIMAFLEX® UK .....	14
INSUL-TUBE® .....	16
INSUL-TUBE® xt .....	20
INSUL ROLL / INSUL ROLL xt /INSUL SHEET .....	22
AEROFLEX® (ht) .....	24
AEROFLEX® (ht) roll / (ht) sheet .....	26
SOLAR TUBE eco.....	28
Accessories .....	30



**SAVE  
ENERGY  
AND  
PRESERVE  
THE  
ENVIRONMENT**

Запитуйте продукцію в магазинах Півдояма та на сайті [www.pivdoyama.ua](http://www.pivdoyama.ua)



## HEATING & PLUMBING

Piping systems which are not insulated cool off quickly, raising the risk of costly energy being lost from heating and hot water pipes. NMC's polyethylene or elastomer foam insulation products protect systems against this type of energy loss. Our versatile, long-lasting insulation solutions offer a high level of mechanical protection. Whether in a new build, a renovation or a refit, the potential savings are high, while the installation outlay is low.

## THERMAL SOLAR MODULE

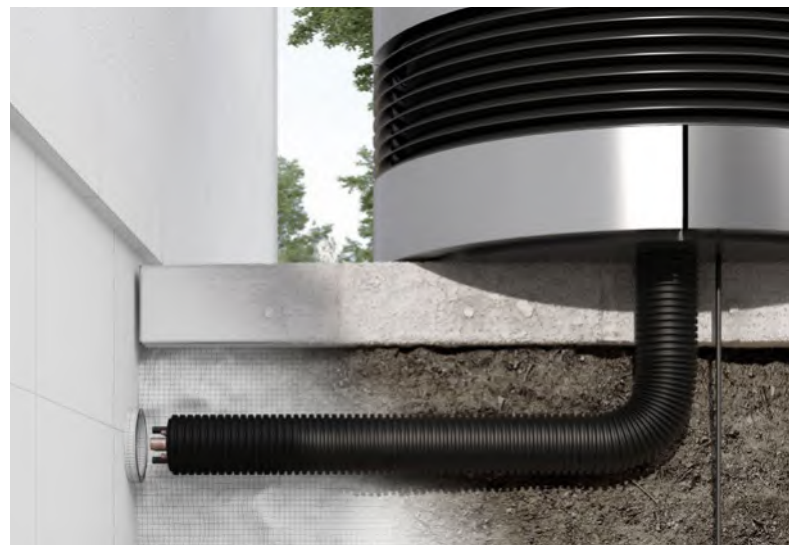
Energy from solar power is not just green, it is also infinite. Effective insulation helps to keep yields from solar facilities at a high level. The piping between the solar panels and the heat accumulator is particularly important. Flexible product solutions from NMC stop possible heat bridges and energy losses here. Outdoors, too, our insulating products remain fully functional. They are tough enough to withstand bad weather and temperatures of up to 150 degrees Celsius – or even 175 degrees Celsius for short periods close to the actual panels. In addition, NMC insulating products resist UV light and ozone radiation as well as mechanical impacts.

## VENTILATION

Whether at home or at work, regular circulation of fresh air is important for our health and wellbeing. In enclosed buildings and spaces, ventilation pipes are therefore indispensable. If these lifelines are protected with NMC's closed-cell insulating products, they will be immune to defrost water. Mould and corrosion will stand no chance, and the systems will remain intact. For large-scale systems, NMC offers sleeves and sheet products based on EPDM. Self-supporting ventilation pipes indoors can be sustainably protected with solutions to prevent both noise and heat loss.

## HEAT PUMPS

Heat pumps represent a good alternative to heating systems running on oil, gas or wood. They harness the natural heat of the earth, the sun, the air or ground water to fill our homes with heat energy. In so doing, they make an active contribution towards protecting our environment. NMC manufactures complete systems with special anti-leak designs for pipework. This stops any energy being lost on its way from the heat source to the heat pump and onwards to the heat distribution system and piping system. These brilliantly designed complete systems for indoors and outdoors are simple and quick to fit.





## HIGH TEMPERATURES

Pipes and equipment in high-temperature contexts can heat to over a hundred degrees Celsius. In such situations, the formation of heat bridges can lead to correspondingly high energy losses. NMC's special system solution prevents this and reduces heat losses to a minimum. The systems can handle temperatures of up to 175 degrees Celsius. This is rendered possible thanks to EPDM-based materials which offer extreme heat resistance. Furthermore, the closed-cell insulation material is also highly flexible and offers outstanding chemical resistance. To enable an ideal installation, it comes in sleeves, sheets or a continuous variant.

## AIR CONDITIONING

Good air conditioning systems help us breathe more easily. They regulate the temperature, moisture and quality of indoor air. If that air is colder in the pipes than in the ambient environment, then uninsulated pipes release defrost water. This in turn causes damage by way of mould and corrosion. NMC insulation products made

from elastomer foams offer preventive protection, because their low heat conductivity values give them very good thermal insulation properties. This means that defrost water is stopped before it can even occur. In addition, sustainable insulation significantly drives down energy consumption.

## COOLING SYSTEMS

Whether in a supermarket deep-freeze or a temperature-controlled printing process, refrigeration systems have an important role to play in many areas of industry. To keep them working properly, good insulation is crucial. If pipes are not insulated, they can release defrost water. That causes corrosion and mould. Because of the extremely fine cellular structure of their rubber, NMC's insulation products offer a high level of resistance to water vapour diffusion and a very low thermal conductivity value. This helps NMC insulation products to ensure that no defrost water is produced. In addition, they increase system efficiency.



## INDUSTRY

Industry is an area where technical systems are as varied as they are complex. The more pipes, vessels or special parts such a system has, the higher the potential for energy savings. At the same time, however, there is a risk that uninsulated elements can degenerate into a money pit without being noticed. For this reason, NMC offers premium sleeve, roll and sheet products for correct insulation. Our range runs from complex shapes such as flanges, fittings or valves to insulating materials for particular custom sizes and special surfaces. So this means we can offer tailor-made insulation solutions for every element in a system.

## INTEGRATED SOLUTIONS OEM

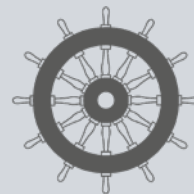
A high level of specialisation does have its downsides: there are certain technical tasks which are difficult to complete using ordinary products. Here at NMC, we develop and produce individual solutions to meet our customers' specific criteria. As experts in the OEM field, we work successfully with our long-standing partners. When it comes to further processing, our insulation solutions offer the ultimate in functional security and are perfect for incorporating into individual production processes. NMC's innovations range from pre-insulation for composite pipes to special applications. Our engineers will be glad to answer any questions you may have about technical procedures.



# APPLICATION AREA

	<i>Heating &amp; plumbing</i>	<i>Heat pumps</i>	<i>Thermal solar module</i>	<i>Ventilation</i>	<i>Air conditioning</i>	<i>High temperatures</i>	<i>Cooling systems</i>	<i>Industry</i>
<b>CLIMAFLEX®</b>								
CLIMAFLEX® UK	•							
<b>INSUL-TUBE®</b>								
INSUL-TUBE®	•				•		•	
INSUL-TUBE® xt	•				•		•	
INSUL ROLL / INSUL ROLL xt	•			•	•		•	•
<b>AEROFLEX®</b>								
AEROFLEX® (ht)	•	•	•	•	•	•	•	•
AEROFLEX® (ht) roll	•	•	•	•	•	•	•	•
AEROFLEX® (ht) sheet	•	•	•	•	•	•	•	•

## OUR CERTIFICATES



## OFFICIAL MEMBER OF



---

# WE TAKE OUR RESPONSIBILITIES SERIOUSLY

As a family-run company, NMC has always been committed to fulfilling its responsibilities to future generations.

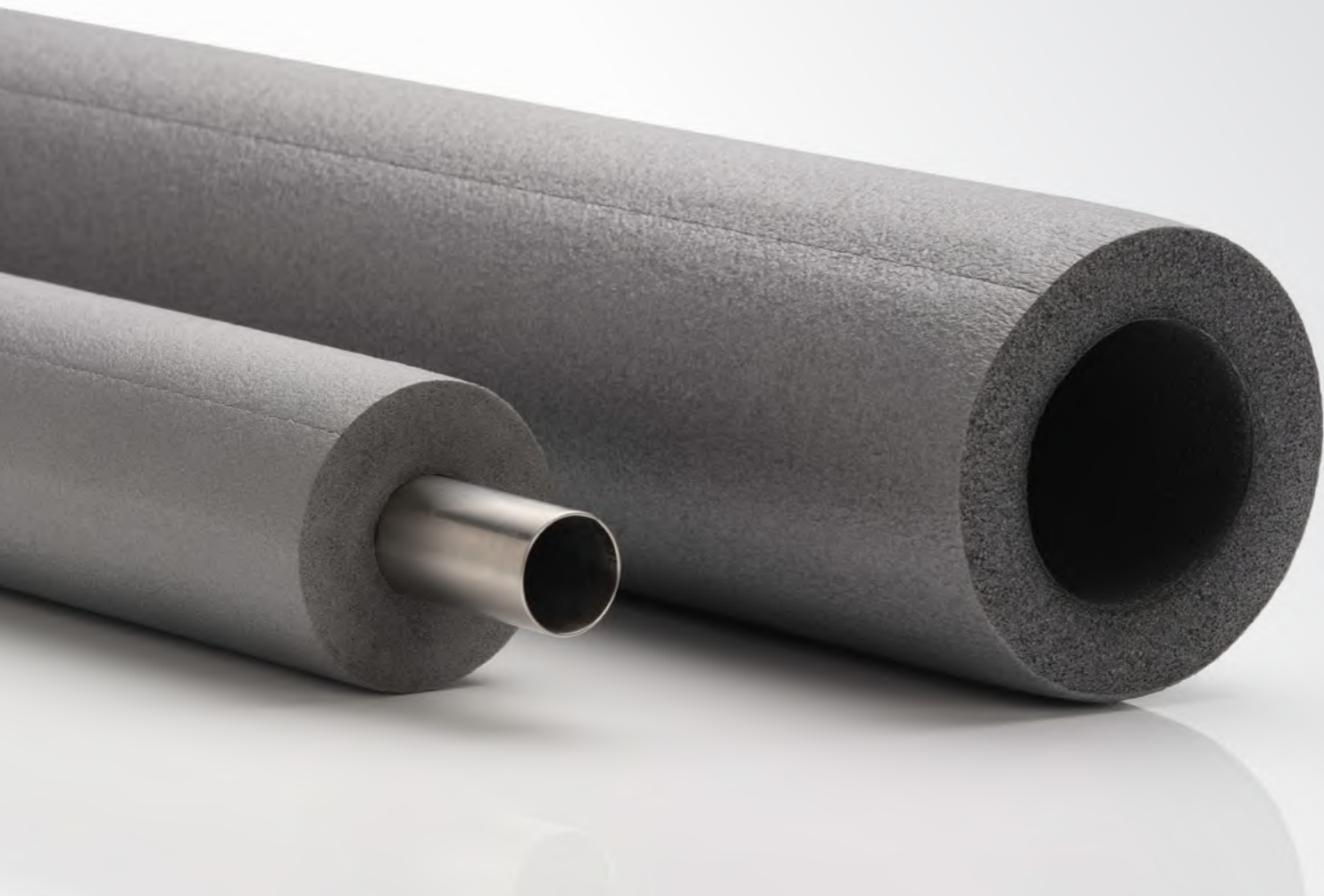
This awareness drives us to make a sustainable contribution to climate and environmental protection at various levels. Each phase in the manufacture of our products is monitored and optimised with a view to creating products in a way that helps to conserve the available resources.

## NMC'S COMMITMENT TO CLIMATE PROTECTION

- We cover 100 % of our electricity consumption with renewable energy. We also have our own photovoltaic installation.
- Having our own recycling facilities means that almost 100 % of our production waste is recovered and reused.
- Closed circuits reduce our water consumption to the minimum.
- We have ISO 14001 certification, the international standard for environmental management systems.
- We take part in operation CleanSweep®.



Залуптуе прудуццю в мугезнх Півдуюм тл нл селтл [www.pivdnyuma.ua](http://www.pivdnyuma.ua)



# CLIMAFLEX®

UK

## TECHNICAL INFORMATIONS

### MATERIAL

CLIMAFLEX® UK is a flexible insulating material made of foamed, closedcell polyethylene.

### LENGTH

1 m / 2 m

### TEMPERATURE RANGE

(EN 14707)

0 °C to +100 °C

### APPLICATION AREA

Heating and plumbing

### THERMAL CONDUCTIVITY (EN ISO 8497)

0,036 W/mK at 0 °C

0,040 W/mK at 40 °C

0,053 W/mK at 90 °C

### FIRE PERFORMANCE

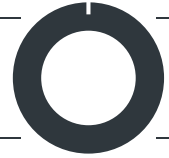
Euroclass E

## ADVANTAGES

- Professional thermal insulation for energy savings of up to 80 %
- Improvement of the economic and ecological efficiency of the entire unit
- Sound absorbing insulation for acoustic comfort

CLIMAFLEX®

UK



Copper Cu		Steel Fe			Synthetics MSV & PEX	ID	9 mm INSULATION THICKNESS		13 mm INSULATION THICKNESS		19 mm INSULATION THICKNESS	
NW DN	Outer Ø mm	NW DN	Outer Ø mm	inch	Outer Ø mm	mm	SAP	m/	SAP	m/	SAP	m/
8	10	6	10,2	1/8	-	10	3003408	460	-	-	-	-
10	12/15	8	13,5	1/4	-	15	3003409	380	3003423	256	3003443	134
20	22	15	21,3	1/2	20	22	3003414	250	3003429	180	3003445	108
25	28	20	26,9	3/4	25	28	3003718	190	3003434	140	3003449	96
32	35	25	33,7	1	32	35	3003421	150	3003437	120	-	-
40	42	32	42,4	1 1/4	40	42	3003422	110	3003439	90	-	-
-	-	40	48,3	1 1/2	40,2	48	3047361	90	3047373	70	-	-
50	54	-	54	-	50	54	3047362	70	3003440	66	-	-
-	-	50	60,3	2	-	60	3047363	66	3047375	48	-	-
65	76,1	65	76,1	2 1/2	-	76	3047365	48	3047377	40	-	-
80	88,9	80	88,9	3	-	89	-	-	3003441	30	-	-

Copper Cu		Steel Fe			Synthetics MSV & PEX	ID	25 mm INSULATION THICKNESS		9 mm INSULATION THICKNESS		13 mm INSULATION THICKNESS	
NW DN	Outer Ø mm	NW DN	Outer Ø mm	inch	Outer Ø mm	mm	SAP	m/	SAP	m/	SAP	m/
8	10	6	10,2	1/8	-	10	-	-	-	-	-	-
10	12/15	8	13,5	1/4	-	15	3003453	100	3003410	190	3003424	128
20	22	15	21,3	1/2	20	22	3003459	80	3003415	125	3003430	90
25	28	20	26,9	3/4	25	28	3003464	66	3003419	95	3003435	70

Copper Cu		Steel Fe			Synthetics MSV & PEX	ID	19 mm INSULATION THICKNESS		25 mm INSULATION THICKNESS	
NW DN	Outer Ø mm	NW DN	Outer Ø mm	inch	Outer Ø mm	mm	SAP	m/	SAP	m/
8	10	6	10,2	1/8	-	10	-	-	-	-
10	12/15	8	13,5	1/4	-	15	3003444	67	3003454	50
20	22	15	21,3	1/2	20	22	3003446	54	3003461	40
25	28	20	26,9	3/4	25	28	3003450	48	3003466	33

2m length: 600 x 2005 x 397 mm

1m length: 595 x 1025 x 395 mm



# INSUL-TUBE®

## TECHNICAL INFORMATIONS

### MATERIAL

INSUL-TUBE® is a flexible insulation material made of closed cell foam based on rubber.

### LENGTH

2 m

### THERMAL CONDUCTIVITY (EN ISO 8497)

6-25 mm

0,033 W/mK at -30 °C

0,034 W/mK at 0 °C

0,038 W/mK at 40 °C

0,041 W/mK at 70 °C

32-60 mm

0,031 W/mK at -30 °C

0,035 W/mK at 0 °C

0,040 W/mK at 40 °C

0,043 W/mK at 70 °C

### TEMPERATURE RANGE (EN 14707)

-30 °C to +110 °C

### FIRE PERFORMANCE (EN 13501-1)

B<sub>1</sub>s3d0

### WATER VAPOUR DIFFUSION RESISTANCE (EN 13469)

≤ 25 mm: 10.000 μ

≥ 32 mm: 7.000 μ

### APPLICATION AREA

Heating and plumbing

Air conditioning

Cooling systems

Ship approval

## ADVANTAGES

- Due to the very good thermal insulation properties, the energy input for the operation of air-conditioning and refrigeration systems as well as sanitary and heating installations can be significantly reduced
- Improvement of the economic and ecological efficiency of the entire unit
- Prevention of condensation
- Sound absorbing insulation for acoustic comfort

# INSUL-TUBE®



Copper Cu		Steel Fe			Synthetics MSV & PEX	ID mm	6 mm INSULATION THICKNESS		9 mm INSULATION THICKNESS		13 mm INSULATION THICKNESS	
NW DN	Outer Ø mm	NW DN	Outer Ø mm	Outer Ø inch	Outer Ø mm		SAP	m/📦	SAP	m/📦	SAP	m/📦
4	6	-	-	-	-	6	3044209	500 ■	3044210	330	-	- ■
-	8	-	-	-	-	8	3044211	480	-	-	-	-
8	10	6	10,2	1/8	-	10	3010541	430 ■	3044213	290	3011134	190 ■
10	12	-	-	-	-	12	3010543	350 ■	3044214	250	3011135	172
10	15	8	13,5	1/4	-	15	3010554	300 ■	3044216	212	3044217	140
15	18	10	17,2	3/8	16	18	-	-	3044219	160	-	-
20	22	15	21,3	1/2	20	22	3010557	216	3044221	140	3044222	98
25	28	20	26,9	3/4	25	28	3010558	150 ■	3011124	124	3010915	86
32	35	25	33,7	1	32	35	-	- ■	3011125	92	3011005	76
40	42	32	42,4	1 1/4	40	42	-	-	3011127	70	3011004	56
-	-	40	48,3	1 1/2	40,2	48	-	-	3011128	60	3011001	48
50	54	-	54	-	50	54	-	-	3010911	60	3011137	46
-	-	50	60,3	2	-	60	-	-	3011129	60 ■	3011138	40
65	76,1	65	76,1	2 1/2	-	76	-	-	-	- ■	3010999	34
-	80	-	-	-	-	80	-	-	-	-	3011716	30
80	88,9	80	88,9	3	-	89	-	-	-	- ■	3010918	30
100	108	-	108	-	-	108	-	-	-	- ■	3011141	28 ■
100	114	100	114,3	4	-	114	-	-	-	- ■	3011142	28 ■

📦 400 x 2110 x 320 mm

■ Dimensions are only available on special order, other dimensions on request.

# INSUL-TUBE®



Copper Cu		Steel Fe			Synthetics MSV & PEX	ID mm	19 mm INSULATION THICKNESS		25 mm INSULATION THICKNESS		32 mm INSULATION THICKNESS	
NW DN	Outer Ø mm	NW DN	Outer Ø mm	Outer Ø inch	Outer Ø mm		SAP	m/📦	SAP	m/📦	SAP	m/📦
4	6	-	-	-	-	6	-	-	-	-	-	-
-	8	-	-	-	-	8	-	-	-	-	-	-
8	10	6	10,2	1/8	-	10	3011080	106	-	-	■	-
10	12	-	-	-	-	12	3011718	100	-	-	■	-
10	15	8	13,5	1/4	-	15	3011002	86	3038258	50	■	3011171
15	18	10	17,2	3/8	16	18	-	-	-	-	-	-
20	22	15	21,3	1/2	20	22	3010920	74	3011160	42	■	3044223
25	28	20	26,9	3/4	25	28	3010998	58	3011162	40	■	3001637
32	35	25	33,7	1	32	35	3010916	48	3011163	32	■	3011722
40	42	32	42,4	1 1/4	40	42	3011000	40	3011165	24	■	3011441
-	-	40	48,3	1 1/2	40,2	48	3011003	30	3011167	24	■	3011451
50	54	-	54	-	50	54	3010917	30	3011168	22	■	3044226
-	-	50	60,3	2	-	60	3011148	28	3011169	22	■	3011440
65	76,1	65	76,1	2 1/2	-	76	3011151	28	3011170	18	■	3011742
-	80	-	-	-	-	80	3011721	26	-	-	■	-
80	88,9	80	88,9	3	-	89	3011154	22	3011666	14	■	3011448
100	108	-	108	-	-	108	3011380	20	-	-	■	-
100	114	100	114,3	4	-	114	3011157	18	3011470	10	■	3011450

📦 400 x 2110 x 320 mm

■ Dimensions are only available on special order, other dimensions on request.





# INSUL-TUBE®

xt

## TECHNICAL INFORMATION

### MATERIAL

INSUL-TUBE® xt is a flexible insulating material made of closed-cell foam based on rubber with self-adhesive closing system.

### LENGTH

2 m

### THERMAL CONDUCTIVITY (EN ISO 8497)

9-25 mm

0,033 W/mK at -30 °C

0,034 W/mK at 0 °C

0,038 W/mK at 40 °C

0,041 W/mK at 70 °C

32 mm

0,031 W/mK at -30 °C

0,035 W/mK at 0 °C

0,040 W/mK at 40 °C

0,043 W/mK at 70 °C

### TEMPERATURE RANGE (EN 14707)

-30 °C to +85 °C

### FIRE PERFORMANCE (EN 13501-1)

B<sub>1</sub>s3d0

### APPLICATION AREA

Heating and plumbing

Air conditioning

Cooling systems

### WATER VAPOUR DIFFUSION RESISTANCE (EN 13469)

≤ 25 mm: 10.000 μ

≥ 32 mm: 7.000 μ

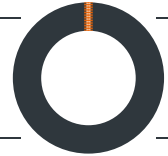
### PROCESSING TEMPERATURE

≥ +5 °C

## ADVANTAGES

- Due to the very good thermal insulation properties, the energy input for the operation of air-conditioning and refrigeration systems as well as sanitary and heating installations can be significantly reduced
- Improvement of the economic and ecological efficiency of the entire unit
- Prevention of condensation
- Sound absorbing insulation for acoustic comfort
- Assembly time reduced up to 50 %
- Self-adhesive

# INSUL-TUBE® | xt



Copper Cu		Steel Fe			Synthetics MSV & PEX		9 mm INSULATION THICKNESS		13 mm INSULATION THICKNESS		
NW DN	Outer Ø mm	NW DN	Outer Ø mm	inch	Outer Ø mm	ID mm	SAP	m/📦	SAP	m/📦	
10	15	8	13,5	½	-	15	3044233	212	3044235	140	
20	22	15	21,3	½	20	22	3044241	140	3044243	98	
25	28	20	26,9	¾	25	28	3011179	124	3011198	86	
32	35	25	33,7	1	32	35	3011180	92	3011200	76	
40	42	32	42,4	1 ¼	40	42	3011181	70 ■	3011201	56	
-	-	40	48,3	1 ½	40,2	48	3011182	60 ■	3011204	48	
50	54	-	54	-	50	54	3011185	60 ■	3011206	46	
-	-	50	60,3	2	-	60	3011186	60 ■	3011207	40 ■	
65	76,1	65	76,1	2 ½	-	76	-	- ■	3011210	34 ■	
80	88,9	80	88,9	3	-	89	-	- ■	3011212	30 ■	

							19 mm INSULATION THICKNESS		25 mm INSULATION THICKNESS		
NW DN	Outer Ø mm	NW DN	Outer Ø mm	inch	Outer Ø mm	ID mm	SAP	m/📦	SAP	m/📦	
10	15	8	13,5	½	-	15	3011218	86 ■	3044218	50 ■	
20	22	15	21,3	½	20	22	3011220	74	3011238	42 ■	
25	28	20	26,9	¾	25	28	3011221	58	3011239	40 ■	
32	35	25	33,7	1	32	35	3011222	48	3011240	32 ■	
40	42	32	42,4	1 ¼	40	42	3011223	40	3011241	24 ■	
-	-	40	48,3	1 ½	40,2	48	3011224	30 ■	3011242	24 ■	
50	54	-	54	-	50	54	3011226	30 ■	3011244	22 ■	
-	-	50	60,3	2	-	60	3011229	28 ■	3011245	22 ■	
65	76,1	65	76,1	2 ½	-	76	3011231	28 ■	3011246	18 ■	
80	88,9	80	88,9	3	-	89	3011232	22 ■	-	- ■	

📦 400 x 2110 x 320 mm

■ Dimensions are only available on special order, other dimensions on request.



# INSUL ROLL

## TECHNICAL INFORMATIONS

### MATERIAL

INSUL ROLL is a flexible insulating material made of closed-cell foam based on rubber (rolled insulation).

### LENGTH

4 - 20 m

### THERMAL CONDUCTIVITY (EN ISO 8497)

0,034 W/mK at -30 °C

0,036 W/mK at 0 °C

0,039 W/mK at 40 °C

0,044 W/mK at 70 °C

### TEMPERATURE RANGE (EN 14707)

-50 °C to +105 °C

### FIRE PERFORMANCE (EN 13501-1)

Bs3d0

### APPLICATION AREA

Heating and plumbing

Air conditioning

Cooling systems

Shipbuilding

### WATER VAPOUR DIFFUSION RESISTANCE (EN 13469)

≤ 25 mm: 10.000 μ

≥ 32 mm: 7.000 μ

## ADVANTAGES





- Due to the very good thermal insulation properties, the energy input for the operation of air-conditioning and refrigeration systems as well as sanitary and heating installations can be significantly reduced
- Improvement of the economic and ecological efficiency of the entire unit
- Prevention of condensation
- Sound absorbing insulation for acoustic comfort
- Cut as needed
- Minimal cutting scrap

## INSUL ROLL | xt

INSULATION THICKNESS

INSUL ROLL

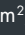
INSUL ROLL xt

mm	SAP	m <sup>2</sup> / 	SAP	m <sup>2</sup> / 
6	3034462	20 	3034418	20 
9	3034463	15	3034419	15
13	3034464	11	3034420	11
19	3034466	8	3034422	8
25	3034467	6	3034423	6
32	3034468	4	3034424	4

 455 x 1070 x 455 mm

INSULATION THICKNESS

INSUL SHEET

mm	SAP	m <sup>2</sup> / 	
6	3001514	18	
9	3001515	13	
13	3001516	9	
19	3001518	7	
25	3001519	5	
32	3001520	4	

 455 x 1070 x 455 mm

 Dimensions are only available on special order, other dimensions on request.



**AEROFLEX®**

(ht)

## TECHNICAL INFORMATIONS

### MATERIAL

AEROFLEX® (ht) is a highly flexible, closed-cell insulation based on high temperature-resistant EPDM.

### LENGTH

2 m

### THERMAL CONDUCTIVITY (EN ISO 8497)

0,036 W/mK at 0 °C

0,037 W/mK at 10 °C

0,038 W/mK at 40 °C

### TEMPERATURE RANGE (EN 14707)

-50 °C to 150 °C (continuous operation - Peak usage up to 175 °C)

### FIRE PERFORMANCE (EN 13501-1)

C<sub>1</sub>-s2,d0

### APPLICATION AREA

Thermal solar module

High temperatures

Industry

Heating and plumbing

Air conditioning

Cooling systems

Shipbuilding

### WATER VAPOUR DIFFUSION RESISTANCE (EN 13469)

≥ 3.000 μ

## ADVANTAGES

- Resistant to high temperatures
- Resistance to weather, UV and ozone
- Due to the very good thermal insulation properties, the energy input for the operation of air-conditioning and refrigeration systems as well as sanitary and heating installations can be significantly reduced
- Improvement of the economic and ecological efficiency of the entire unit
- UL Certification
- Ship approval

AEROFLEX® (ht)



Copper Cu		Steel Fe			Synthetics MSV & PEX		ID mm	6 mm INSULATION THICKNESS		9 mm INSULATION THICKNESS		13 mm INSULATION THICKNESS	
NW DN	Outer Ø mm	NW DN	Outer Ø mm	inch	Outer Ø mm	SAP		m/	SAP	m/	SAP	m/	
4	6	-	-	-	-	6	3034017	360	3034036	264	3034077	160	
-	8	-	-	-	-	8	3034018	320	3034037	220	3034078	140	
8	10	6	10,2	1/8	-	10	3034019	280	3034038	220	3034079	140	
10	12	-	-	-	-	12	3034020	220	3034039	168	3034080	120	
10	15	8	13,5	1/4	-	15	3034022	160	3034041	140	3034082	100	
15	18	10	17,2	3/8	16	18	3034024	140	3034043	120	3034084	80	
20	22	15	21,3	1/2	20	22	3034026	140	3034045	108	3034086	64	
20	25	-	25	3/4	25	25	3034027	120	3034046	88	3034087	60	
25	28	20	26,9	3/4	25	28	3034028	100	3034047	72	3034088	56	
-	-	-	-	1	32	32	3034029	80	3034048	68	3034089	48	
32	35	25	33,7	1	32	35	3034030	80	3034049	64	3034090	40	
40	42	32	42,4	1 1/4	40	42	3034032	60	3034051	56	3034092	36	
-	-	40	48,3	1 1/2	-	45	3034033	56	3034052	48	3034093	36	
-	-	40	48,3	1 1/2	40,2	48	3034034	48	3034053	40	3034094	32	
50	54	-	54	-	50	54	-	-	3034055	36	3034096	28	
-	-	-	-	-	-	57	-	-	3034056	36	3034097	28	
-	-	50	60,3	2	-	60	-	-	3034057	36	3034098	24	
-	64	-	63,5	-	63	64	-	-	3034058	32	3034099	20	
-	-	-	-	-	-	70	-	-	3034060	20	3034101	20	
65	76,1	65	76,1	2 1/2	-	76	-	-	3034062	20	3034103	16	
-	-	-	-	-	-	90	-	-	3034065	16	3034105	16	
-	-	-	101,6	3 1/2	-	102	-	-	3034068	16	3034107	16	
-	-	-	-	-	-	109	-	-	3034070	12	3034108	12	
-	-	-	-	-	-	115	-	-	3034071	12	3034109	12	
-	-	-	125	-	-	125	-	-	3034072	12	3034110	8	
-	-	-	-	-	-	130	-	-	3034074	8	3034112	8	
-	-	125	139,7	5	-	140	-	-	3034075	8	3034113	8	
-	-	-	-	-	-	165	-	-	3034076	8	3034114	8	

 2100 x 450 x 230 mm

■ Dimensions are only available on special order, other dimensions on request.



# AEROFLEX®

(ht) roll

(ht) sheet

## INFORMATIONS TECHNIQUES

### MATERIAL

Highly flexible, closed-cell insulation based on high temperature-resistant EPDM (rolled insulation).

### LENGTH

3-45 m

### THERMAL CONDUCTIVITY (EN ISO 8497)

0,036 W/mK at 0 °C

0,037 W/mK at 10 °C

0,040 W/mK at 40 °C

### FIRE PERFORMANCE (EN 13501-1)

D-s3,d0

### TEMPERATURE RANGE (EN 14707)

-50 °C to 150 °C (continuous operation – Peak usage up to 175 °C). Flexible down to -50 °C, but can be used up to -200 °C

### WATER VAPOUR DIFFUSION RESISTANCE (EN 13469)

≥ 3.000 μ

### APPLICATION AREA

Thermal solar module  
High temperatures  
Industry  
Heating and plumbing  
Air conditioning  
Cooling systems  
Shipbuilding

## ADVANTAGES

- Resistant to high temperatures
- Resistance to weather, UV and ozone
- Due to the very good thermal insulation properties, the energy input for the operation of air-conditioning and refrigeration systems as well as sanitary and heating installations can be significantly reduced
- Improvement of the economic and ecological efficiency of the entire unit
- Ship approval
- UL Certification
- Cut as needed
- Minimal cutting scrap

## AEROFLEX®

(ht) roll

(ht) sheet

### INSULATION THICKNESS

#### AEROFLEX® (ht) roll

#### AEROFLEX® (ht) sheet

mm	SAP	m/📦	SAP	m/📦
13	3034481	11 ■	3034392	24
19	3034483	7 ■	3034394	16
25	3034484	5 ■	3034395	12
📦 1085 x 465 x 465 mm			📦 2100 x 1050 x 910 mm	

■ Dimensions are only available on special order, other dimensions on request.



# SOLAR-TUBE®

eco

## TECHNICAL INFORMATIONS

### APPLICATION AREA

SOLAR-TUBE® eco is a double, pre-insulated, corrugated stainless steel tube with integrated sensor cable for the connection of a thermal solar system to the heating circuit.

### TEMPERATURE RANGE

up to +150 °C continuous, and  
up to +175 °C short term

### THERMAL CONDUCTIVITY

0,036 W/mK at 0 °C  
0,040 W/mK at 40 °C

### FIRE PERFORMANCE

(EN 13501-1)  
Euroclass E

### UV RESISTANCE

High

### OZONE RESISTANCE

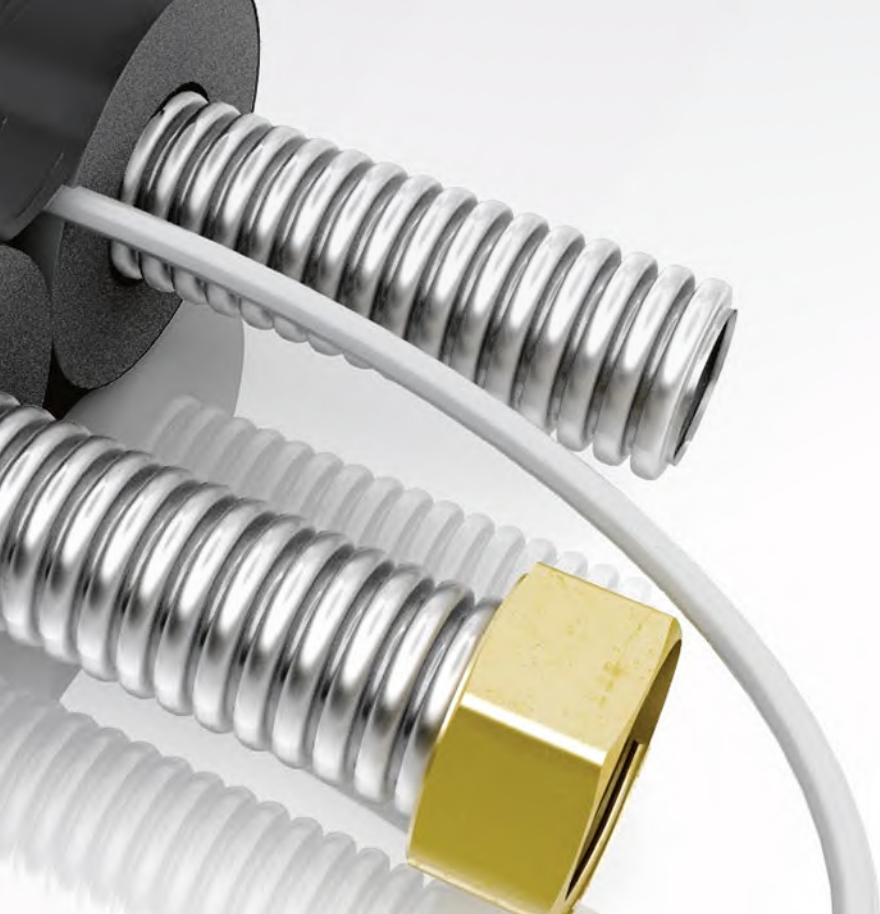
High

### COLOUR

Black

## DESCRIPTION

Heat-resistant, rubber (EPDM) pre-insulated, corrugated stainless steel pipe with integrated sensor lead for the direct connection of solar thermal systems to heating circuits.



## SOLAR-TUBE® | eco

Reference	SAP	m/📦
<b>DN 16</b>		
DN 16 - 13 mm/10 m	3028945	10
DN 16 - 13 mm/15 m	3028946	15
DN 16 - 13 mm/20 m	3028947	20
DN 16 - 13 mm/25 m	3028948	25
DN 16 - 13 mm/50 m	3032473	50
<b>DN 20</b>		
DN 20 - 13 mm/10 m	3028949	10
DN 20 - 13 mm/15 m	3028950	15
DN 20 - 13 mm/20 m	3032483	20
DN 20 - 13 mm/25 m	3028951	25
DN 20 - 13 mm/50 m	3032484	50
<b>DN 25</b>		
DN 25 - 13 mm/10 m	3032492	10
DN 25 - 13 mm/15 m	3032493	15
DN 25 - 13 mm/20 m	3032494	20

\*\*Please note installation set is included - Additional sets are priced below

# ACCESSORIES

## INSUL-TUBE®



**NMC FiX**

	SAP	St./	
1000 ml	3012344	6	



**NMC FiX**

	SAP	St./	
500 ml	3012343	12	



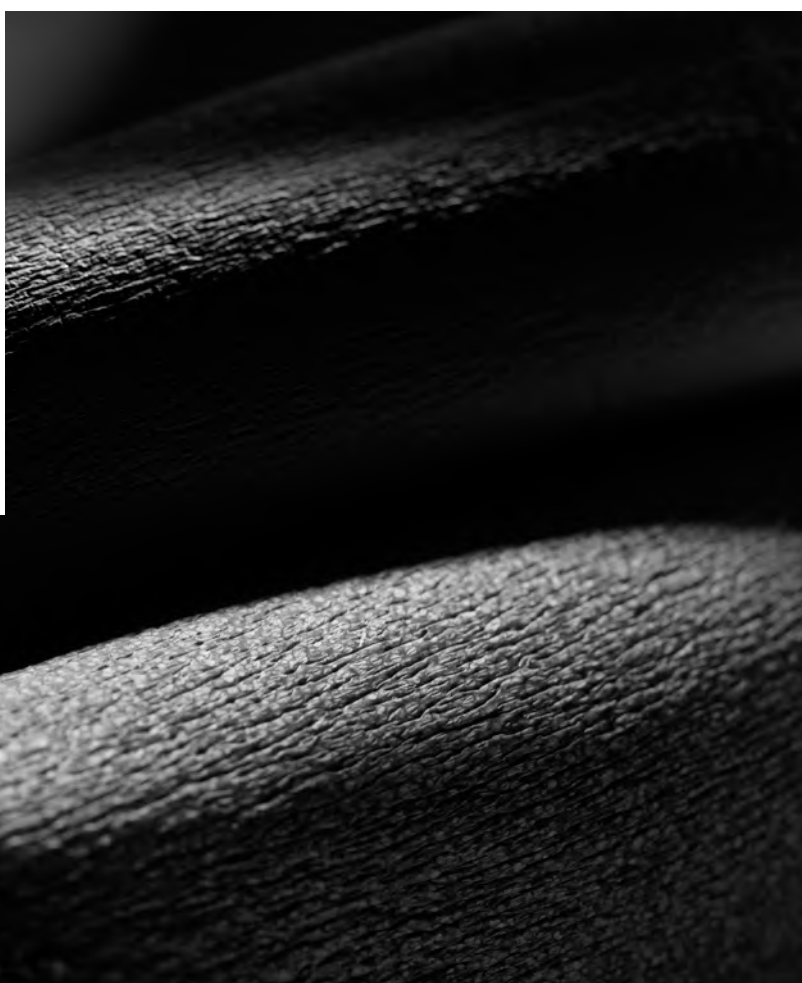
**Insul tape**

	SAP	St./	
3 x 50 mm x 15 m	3002092	12	



**Slitting knife**

	SAP	St./	
each knife with 5 spare blades	3003583	1	



# ACCESSORIES

## CLIMAFLEX®



### Foam Tape

	SAP	St./☞
3 x 50 mm x 10 m	3002119	12

### Clips

	SAP	St./☞
	3003572	20 x 50

### NMC FiX

	SAP	St./☞
250ml tin	3012342	24

## SOLAR-TUBE® | eco

### Set

Reference	SAP	Pcs./☞
DN 16	3002128	1
DN 20	3002130	1
DN 25	3002132	1

### Clamp

Reference	SAP	Pcs./☞
Clamp 1	3002129	1
Clamp 2	3002131	1

NMC reserves the right to update the product line or its technical features to the state-of-the-art technology anytime and without previous announcement. All given information is to the best of our knowledge. If you have any questions concerning technical details please contact the NMC information service. Any partial reproduction or reprint shall require our explicit approval.



**NMC UK Ltd.**

Tafarnaubach Industrial Estate  
UK - NP22 3AA Tredgar, South Wales  
☎ +44 1495 71 32 66  
enquiries@nmc-uk.com



[www.nmc-insulation.com](http://www.nmc-insulation.com)

Запитуйте продукцію в магазинах Півдюйма та на сайті [www.pivduyma.ua](http://www.pivduyma.ua)